



HERIOT ROAD RAINHAM

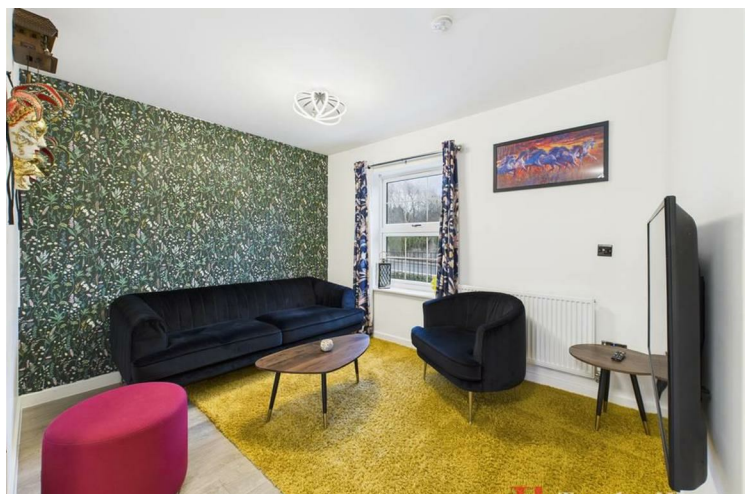
£475,000
Guide price

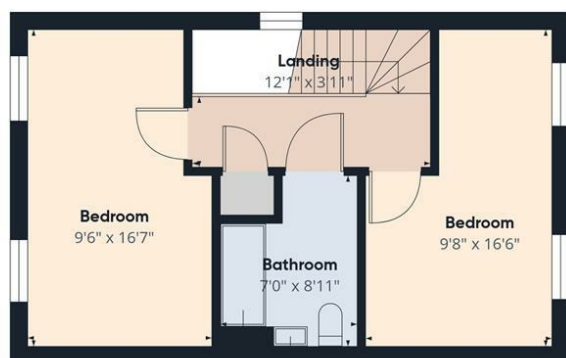
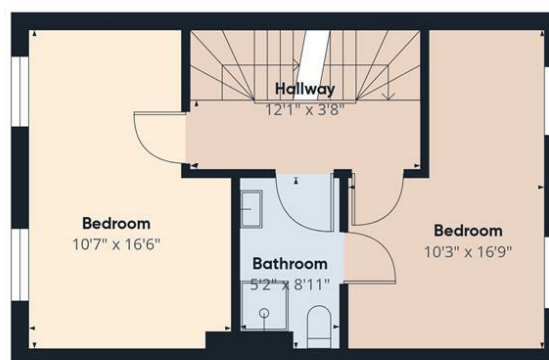
GUIDE PRICE OF £475,000-£500,000

Viewings are essential to truly appreciate the size and brightness of this beautifully presented four bedroom property, ideally located within walking distance of Rainham Station on the C2C line making it a perfect choice for both commuters and families.

Upon entering, you are welcomed into a bright and open plan lounge that flows seamlessly into a fully fitted kitchen and dining area. This space is perfect for spending quality family time or entertaining guests. A spacious ground floor W/C adds to the convenience of modern living.

The rear garden is low maintenance and benefits from handy side access, ideal for those with busy lifestyles. To the rear of the property, there is also an allocated parking space, offering



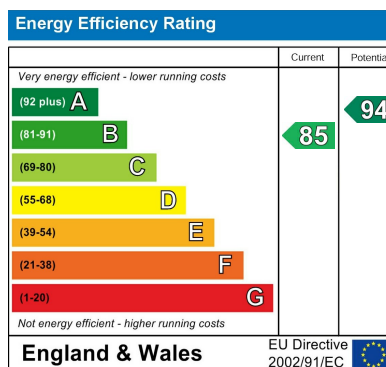


Approximate total area⁽¹⁾
1228 ft²

(1) Excluding balconies and terraces

Calculations reference the RICS IPMS 3C standard. Measurements are approximate and not to scale. This floor plan is intended for illustration only.

GIRAFFEE360



Agents Note: Whilst every care has been taken to prepare these particulars, they are for guidance purposes only. All measurements are approximate and are for general guidance purposes only and whilst every care has been taken to ensure their accuracy, they should not be relied upon and potential buyers/tenants are advised to recheck the measurements.

Together Homes
21 Station Parade
Hornchurch
RM12 5AB

01708 320 600
sales@togetherhomes.co.uk
togetherhomes.co.uk



Together Homes